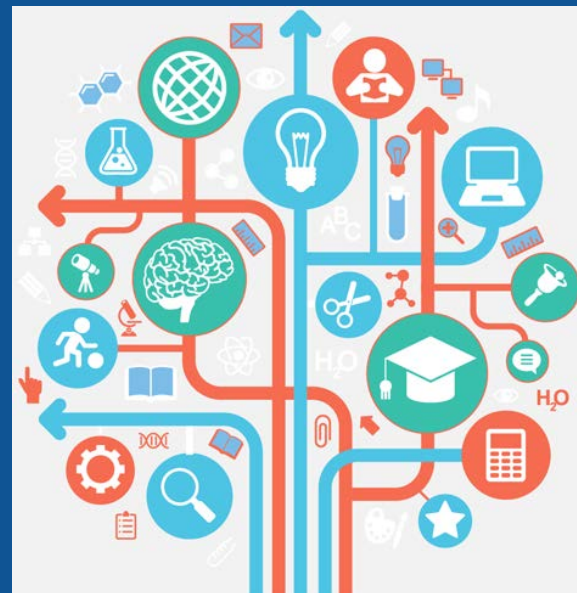


EPALE



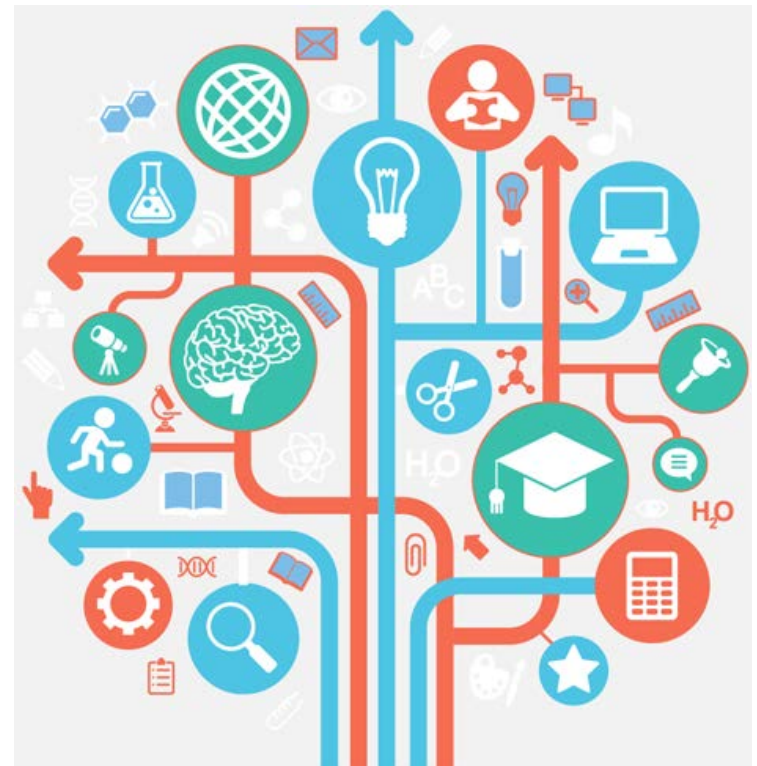
Electronic Platform for Adult Learning in Europe: present and future

Maria Luisa GARCIA MINGUEZ
Deputy Head of Unit (EACEA)



EPALE

Rationale and objectives



Adult learning – the context

A very diversified sector

- Lifelong, life-wide
- Diversity of
 - learners' profiles and needs
 - Providers
 - Staff profiles
- Flexible learning settings

With lots of challenges...

- Funding
- Engaging adult learners
- Overlap with other sectors

- Differences between countries
- Limited Eur. cooperation
- No Eur. space to share expertise



EU 2020, ET 2020,
Copenhagen process ...

Adult Learning

European Agenda for Adult Learning
(Council Resolution 2011)

Strategic vision for AL until 2020

13 Long-term strategic objectives for 2020

**Priority areas
for 2012-2014**

2015 Review
**New priority areas
for 2015-2020**



Vision for Adult Learning 2011-2020

- **Access** at any time in life
- High **quality** learning for personal, social, economic ends
- **Provision** – local, flexible, learner-centred, learning outcomes, validation
- **Partnership** approach with all stakeholders
- Adequate **resourcing**, fairly shared
- **Raise awareness** of benefits

2010

The idea of EPALE was born...

2011-
2012

Feasibility study: yes we can !

2013

Central Support Service

2014

National Support Services

2015

Official launch of EPALE

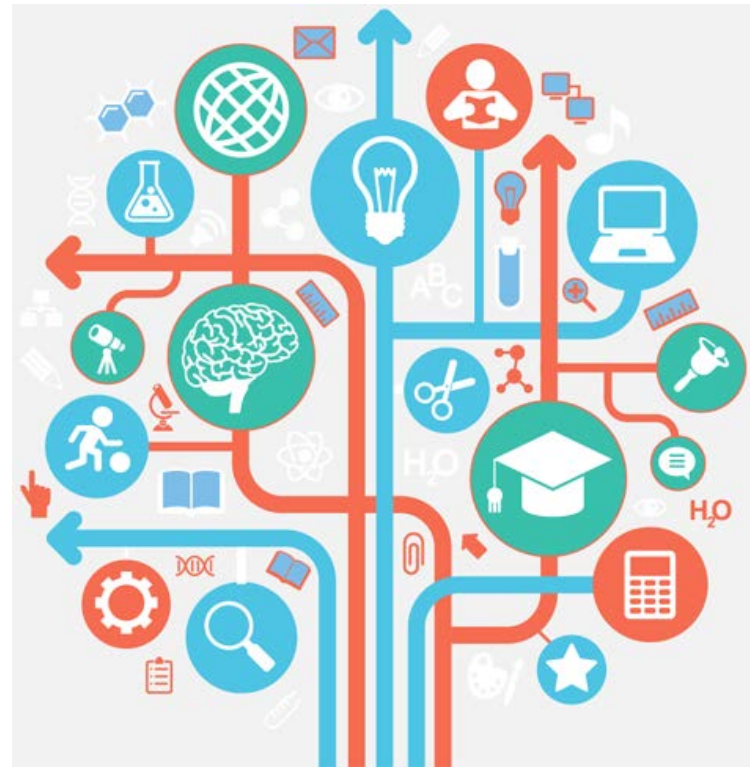


Objective

EPALE is designed to become the reference point on adult learning in Europe, and should become essential to any professional in the field.

EPALE

Target group



Professionals
*involved in
organising,
funding or
delivering
adult
education*

- Providers and their staff
- National associations of AE
- **Policy-makers**
- Universities / researchers
- Media / journalists
- Local administrations

Working in various domains

Basic skills

2nd chance education

Guidance

C-VET

Social inclusion

Culture

...

With many different learners

Low-skilled

Unemployed

Employees

Migrants

(ex) prisoners

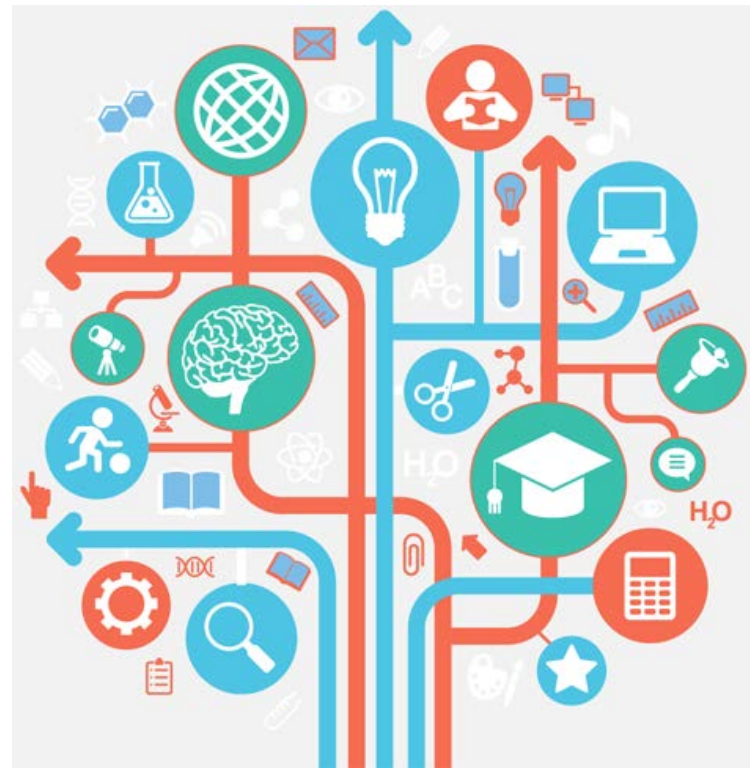
Seniors

People with disabilities

...

= > ALL ADULTS

What's in EPALE?



Main characteristics

Collaborative

User driven

Multilingual

What can you do in EPALE?

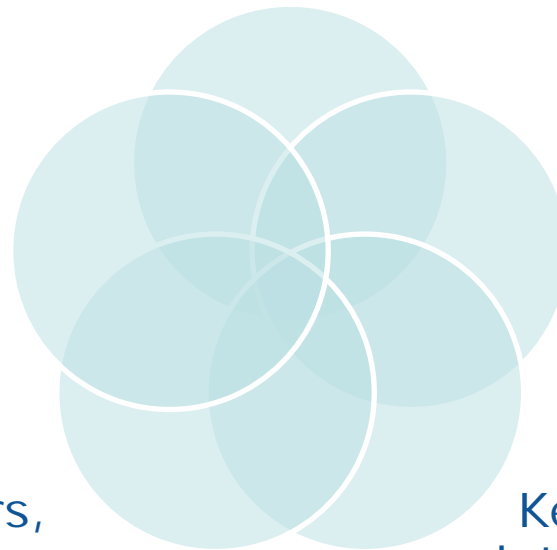
Share ideas and results

Find out about
professional
development
opportunities

Find inspiration

Meet partners,
connect with peers

Keep up to date with
latest news in the field



Features

Calendar of
events and
courses

E-Library

News

Social media

Info on
funding and
awards

Blog

*Communities
of practice*

Glossary

*Partner
search*

Themes

Learner support

Learning environments

Life skills

Quality

Policies, strategies and financing



<http://ec.europa.eu/epale>

[Twitter](#)

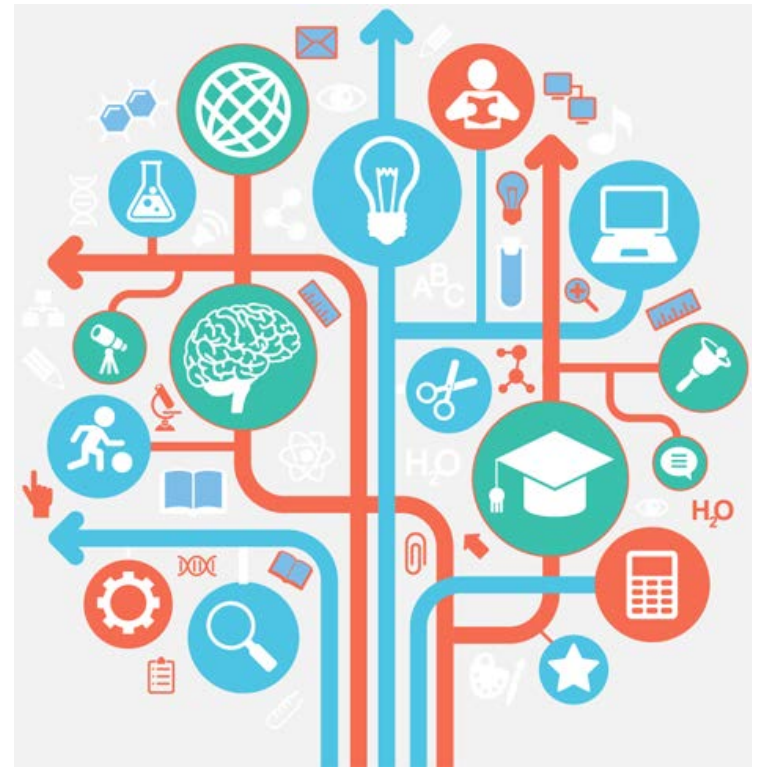
[Facebook](#)

[LinkedIn](#)



European
Commission

EPALE key players





EPALE Steering Committee

DG EMPL	DG EAC	EACEA
Political steering	General management	Contracts CSS + NSS

Implementation

Central Support Service (CSS)	National Support Services (NSS)
Development of platform	Promotion and feeding of EPALE

NSSs in all E+ countries, except (in 2015):

Greece

Hungary

Latvia

Albania

Former
Yugoslav
Republic of
Macedonia

Liechtenstein

Montenegro

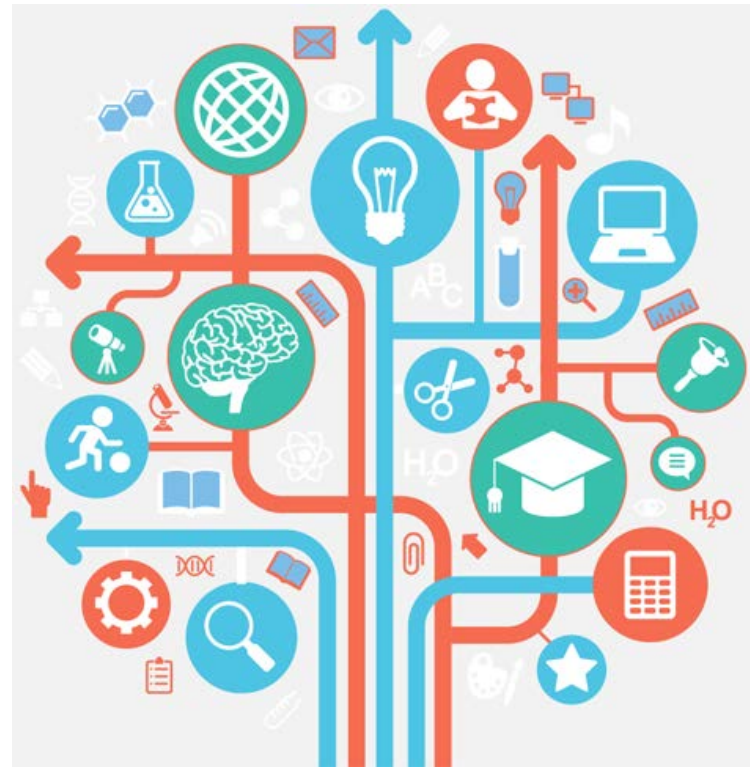
Serbia

Turkey



European
Commission

EPALE and you



Register

- Comment
- Blog
- Find partners

Contribute

- Events
- Ressources
- Articles

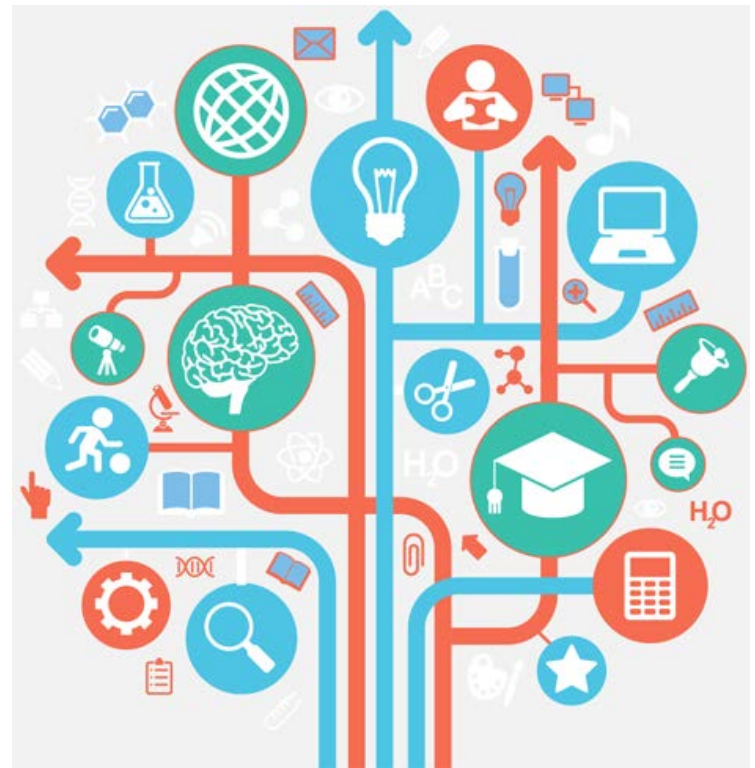
Promote it

- At national...
- ... and local level



European
Commission

Latest developments



People (end of May 2015)

4,512 users registered in the platform



2,704 likes in Facebook



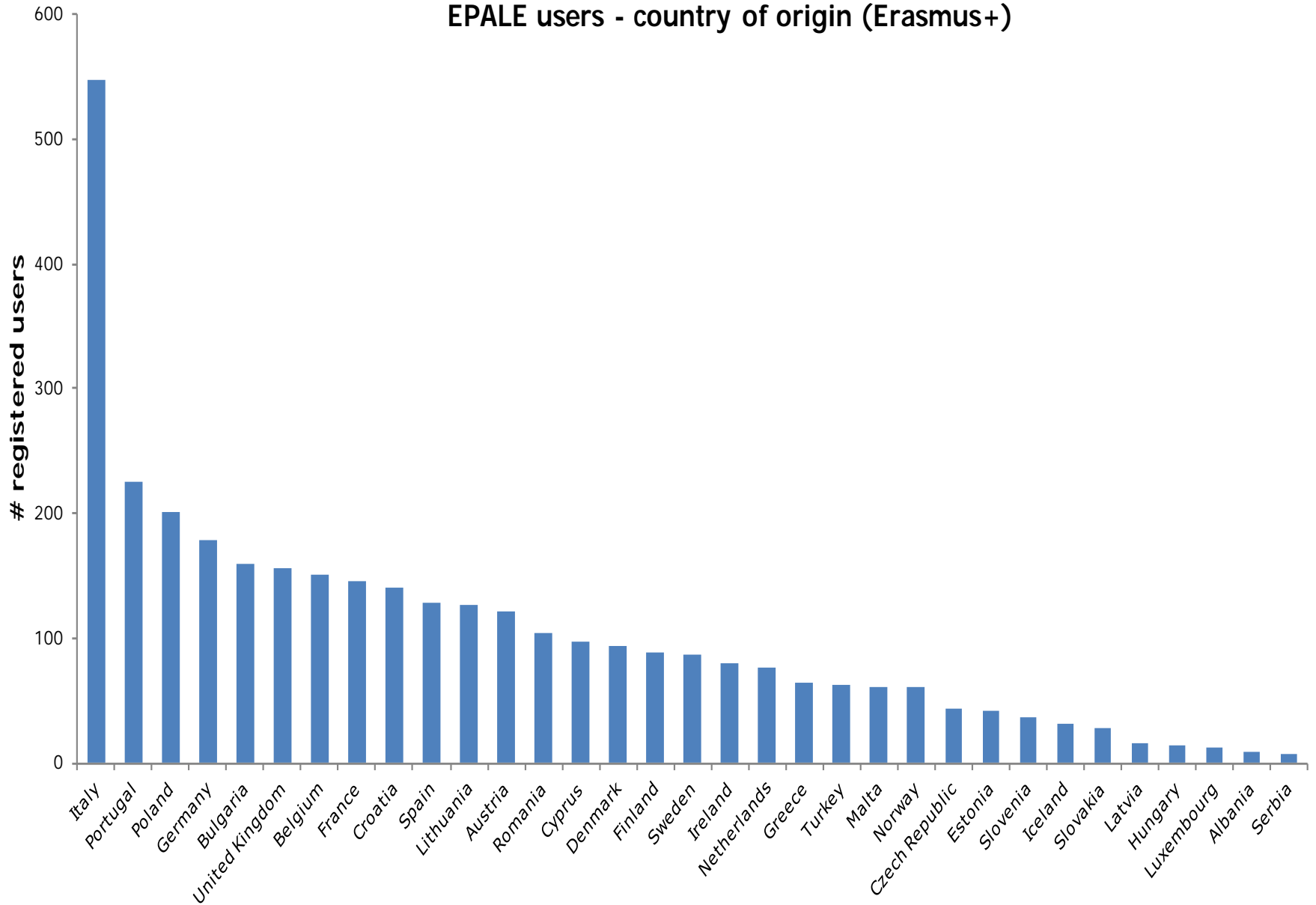
7,186 followers in Twitter



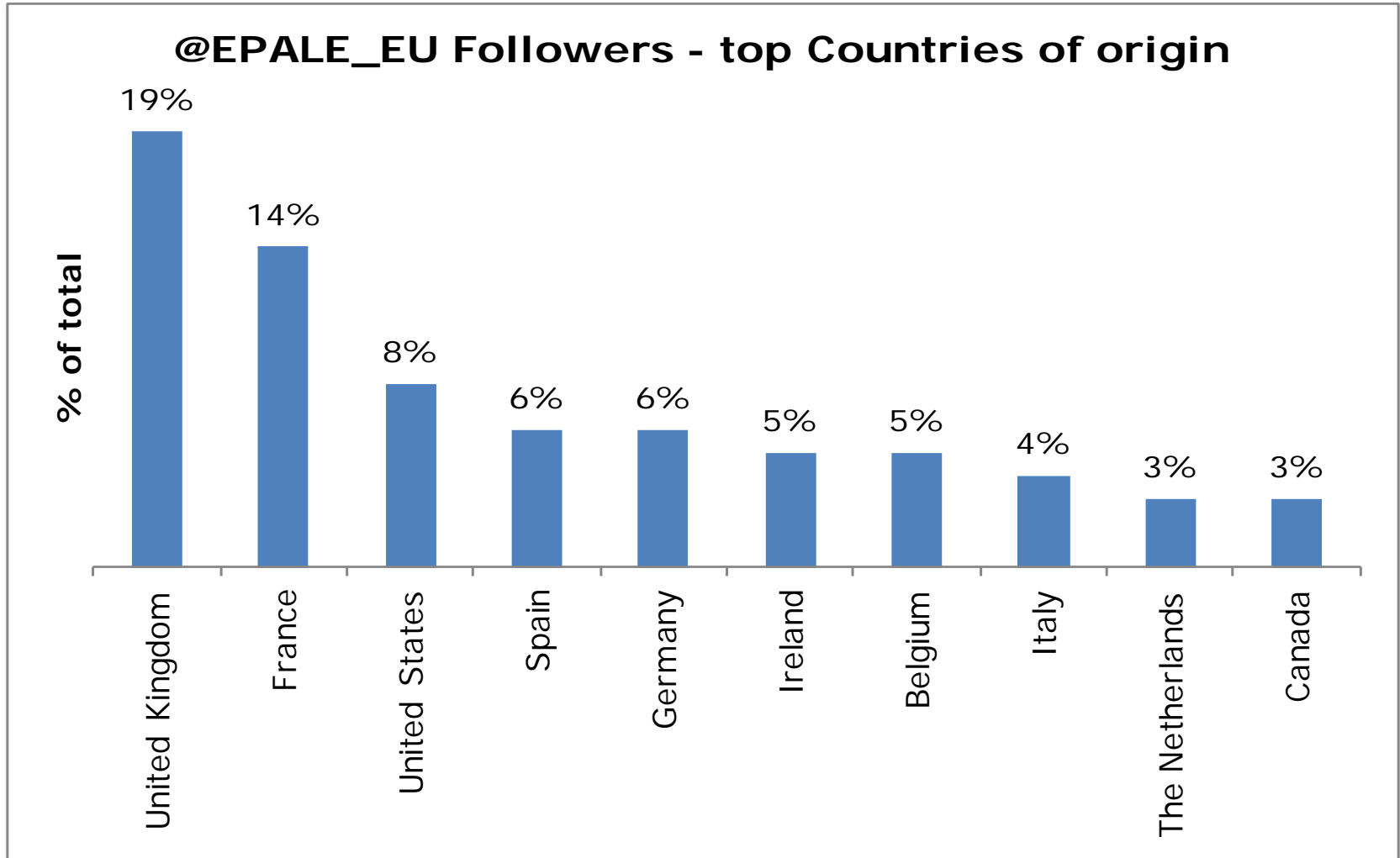
290 members in LinkedIn



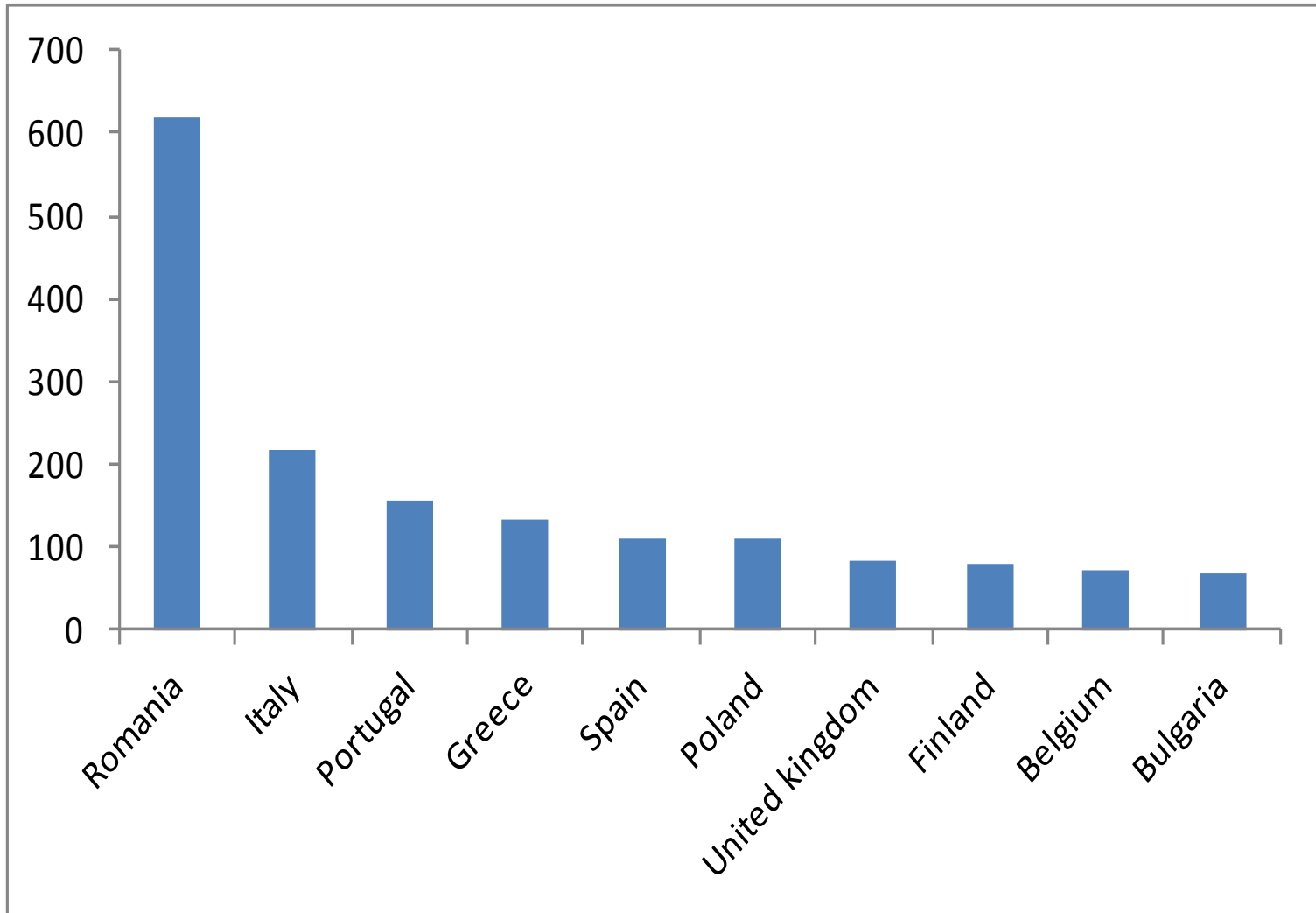
EPALE users - country of origin (Erasmus+)



TWITTER



FACEBOOK



Content (as of 30/04/2015)

409 articles

2 newsletters

249 blog posts

1093 library resources

427 events

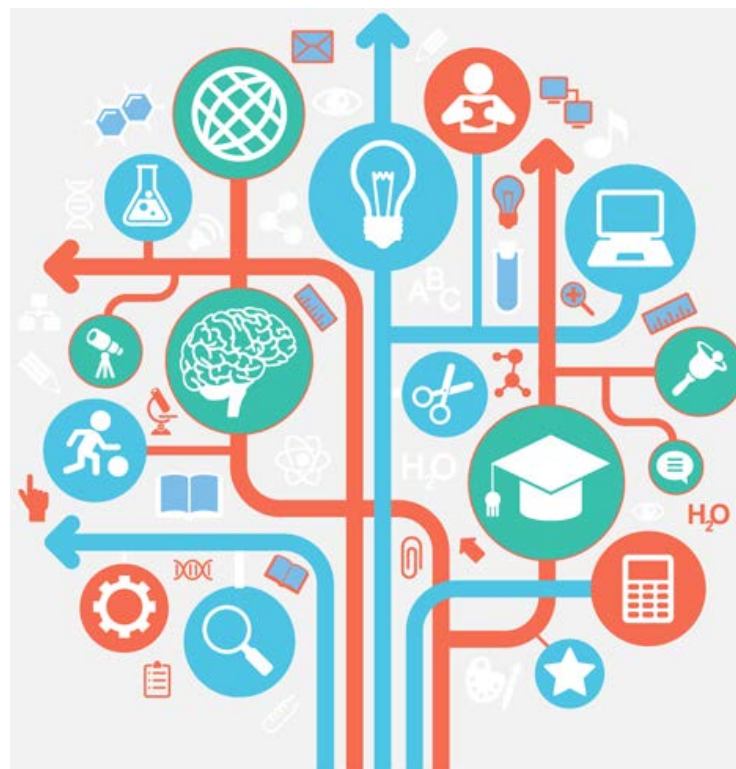


Since the beginning of 2015:

- Launch of new features
 - Resource centre
 - Thematic pages
 - Partner-search

- Launch event (in Brussels) - 15th of April

What's next ?



- *New homepage*
- *Review of user-friendliness*
- *More thematic pages, discussion groups and interaction*
- *Community building*
- *Reaching 20.000 users by the end of 2015*

**Adult
Learning
priorities
2015-2020**



Governance



Supply and take up



Flexibility and access



Quality



More information

<http://ec.europa.eu/epale/>

Questions, suggestions...

maria-luisa.garcia-minguez@ec.europa.eu